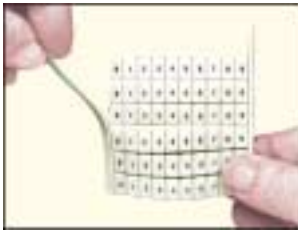


Marking



1

Remove one of the side bands of the card.



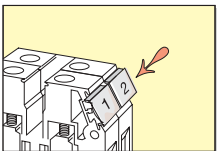
2

Separate the chosen strip from the rest of the card.

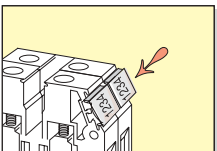


3

Press the first marker in place, hold it and slide your thumb on the rest of the strip.



Horizontal marking



Vertical marking



Refilable box of 100 cards of 18 RC markers

Marking for terminal blocks

Selection table

Markers for blocks :	RC410	RC 510	RC610	RC810	RC1010	RC55	RC65	RCAL85
Screw/ADO								
5 mm spacing	POSSIBLE	●	⊘	⊘	⊘	●	⊘	⊘
6 mm spacing	POSSIBLE	POSSIBLE	●	⊘	⊘	POSSIBLE	●	⊘
8 mm spacing	POSSIBLE	POSSIBLE	POSSIBLE	●	⊘	POSSIBLE	POSSIBLE	●
10 mm spacing	POSSIBLE	POSSIBLE	POSSIBLE	POSSIBLE	●	POSSIBLE	POSSIBLE	POSSIBLE
12 mm spacing	POSSIBLE	POSSIBLE	POSSIBLE	POSSIBLE	●	POSSIBLE	POSSIBLE	POSSIBLE
16 mm spacing	POSSIBLE	POSSIBLE	POSSIBLE	POSSIBLE	●	POSSIBLE	POSSIBLE	POSSIBLE
Spring								
4 mm spacing	●	⊘	⊘	⊘	⊘	⊘	⊘	⊘
5 mm spacing	POSSIBLE	●	⊘	⊘	⊘	●	⊘	⊘
6 mm spacing	POSSIBLE	POSSIBLE	●	⊘	⊘	POSSIBLE	●	⊘
8 mm spacing	POSSIBLE	POSSIBLE	POSSIBLE	●	⊘	POSSIBLE	POSSIBLE	●
10 mm spacing	POSSIBLE	POSSIBLE	POSSIBLE	POSSIBLE	●	POSSIBLE	POSSIBLE	POSSIBLE
12 mm spacing	POSSIBLE	POSSIBLE	POSSIBLE	POSSIBLE	●	POSSIBLE	POSSIBLE	POSSIBLE
16 mm spacing	POSSIBLE	POSSIBLE	POSSIBLE	POSSIBLE	●	POSSIBLE	POSSIBLE	POSSIBLE
Power								
	POSSIBLE	POSSIBLE	POSSIBLE	●	⊘	⊘	⊘	⊘

Possible mounting : POSSIBLE

Recommended mounting : ●

Impossible mounting : ⊘

RC410 ... RC1010	Screw	Spring	ADO
RC55 , RC65	Screw	Spring	ADO

Marking kit RC 5 mm spacing or 6 mm spacing

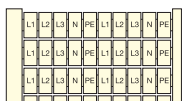
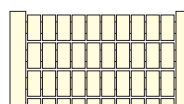
Box with 100 cards with 18 various part numbers (see table next page)

Description	Type	Order P/N	Packaging Weight kg
Box with 100 cards RC 5 mm spacing		1SNA 400 085 R2700	1
Refill for box RC 5 mm		1SNA 400 145 R0700	1
Box with 100 cards RC 6 mm spacing		1SNA 400 084 R2600	1
Refill for box RC 6 mm		1SNA 400 144 R0600	1

Marking (cont.)

Marking for terminal blocks

Standard RC marker cards



Marker sizes	(x) = Nb of cards in 5 mm spacing kit		(x) = Nb of cards in 5 mm spacing kit		(x) = Nb of cards in 6 mm spacing kit		(x) = Nb of cards in 6 mm spacing kit	
	RC410	RC55	RC510	RC65	RC610	RC810	RC1010	
Blank cards	1SNA 229 000 R1500	1SNA 230 000 R1200	1SNA 231 000 R0700	1SNA 232 000 R0000	1SNA 233 000 R0100	1SNA 234 000 R0200	1SNA 238 000 R1600	
Horizontal marking								
10 strips from 1 to 10	1SNA 229 002 R0300	1SNA 230 002 R0000 (5)	1SNA 231 002 R2500 (25)	1SNA 232 002 R2600 (5)	1SNA 233 002 R2700 (25)	1SNA 234 002 R2000	1 to 8 1SNA 238 002 R0400	
10 strips from 11 to 20	1SNA 229 003 R0400	1SNA 230 003 R0100 (2)	1SNA 231 003 R2600 (10)	1SNA 232 003 R2700 (2)	1SNA 233 003 R2000 (10)	1SNA 234 003 R2100	9 to 16 1SNA 238 003 R0500	
10 strips from 21 to 30	1SNA 229 004 R0500	1SNA 230 004 R0200	1SNA 231 004 R2700 (6)	1SNA 232 004 R2000	1SNA 233 004 R2100 (6)	1SNA 234 004 R2200	17 to 24 1SNA 238 004 R0600	
10 strips from 31 to 40	1SNA 229 005 R0600	1SNA 230 005 R0300	1SNA 231 005 R2000 (4)	1SNA 232 005 R2100	1SNA 233 005 R2200 (4)	1SNA 234 005 R2300	25 to 32 1SNA 238 005 R0700	
10 strips from 41 to 50	1SNA 229 006 R0700	1SNA 230 006 R0400	1SNA 231 006 R2100 (3)	1SNA 232 006 R2200	1SNA 233 006 R2300 (3)	1SNA 234 006 R2400	33 to 40 1SNA 238 006 R0800	
10 strips from 51 to 60	1SNA 229 007 R0000	1SNA 230 007 R0500	1SNA 231 007 R2200 (2)	1SNA 232 007 R2300	1SNA 233 007 R2400 (2)	1SNA 234 007 R2500	41 to 48 1SNA 238 007 R0100	
10 strips from 61 to 70	1SNA 229 008 R1100	1SNA 230 008 R1600	1SNA 231 008 R0300 (2)	1SNA 232 008 R0400	1SNA 233 008 R0500 (2)	1SNA 234 008 R0600	49 to 56 1SNA 238 008 R1200	
From 1 to 100	1SNA 229 030 R0200	1SNA 230 030 R0700 (2)	1SNA 231 030 R2400 (15)	1SNA 232 030 R2500 (2)	1SNA 233 030 R2600 (15)	1SNA 234 030 R2700	1 to 80 1SNA 238 030 R0300	
From 101 to 200	1SNA 229 031 R2700	1SNA 230 031 R2400	1SNA 231 031 R1100 (2)	1SNA 232 031 R1200	1SNA 233 031 R1300 (2)	1SNA 234 031 R1400	81 to 160 1SNA 238 031 R2000	
20 times L1-L2-L3-N-PE		1SNA 230 131 R2500	1SNA 231 131 R1200 (2)	1SNA 232 131 R1300	1SNA 233 131 R1400 (2)			
Vertical marking								
10 strips from 1 to 10	1SNA 229 041 R0100	1SNA 230 041 R0600	1SNA 231 041 R2300 (5)	1SNA 232 041 R2400	1SNA 233 041 R2500 (5)	1SNA 234 041 R2600	1 to 8 1SNA 238 051 R0400	
10 strips from 11 to 20	1SNA 229 042 R0200	1SNA 230 042 R0700	1SNA 231 042 R2400 (3)	1SNA 232 042 R2500	1SNA 233 042 R2600 (3)	1SNA 234 042 R2700	9 to 16 1SNA 238 052 R0500	
10 strips from 21 to 30	1SNA 229 043 R0300	1SNA 230 043 R0800	1SNA 231 043 R2500 (2)	1SNA 232 043 R2600	1SNA 233 043 R2700 (2)	1SNA 234 043 R2800	17 to 24 1SNA 238 053 R0600	
10 strips from 31 to 40	1SNA 229 044 R0400	1SNA 230 044 R0100	1SNA 231 044 R2600 (2)	1SNA 232 044 R2700	1SNA 233 044 R2800 (2)	1SNA 234 044 R2100	25 to 32 1SNA 238 054 R0700	
From 1 to 100	1SNA 229 060 R1000	1SNA 230 060 R1500	1SNA 231 060 R0200 (8)	1SNA 232 060 R0300	1SNA 233 060 R0400 (8)	1SNA 234 060 R0500	1 to 80 1SNA 238 080 R0600	

Wire markers

Marker holder tubes for wiring PETC



Special marking

Description	Type	Order P/N	Packaging Weight kg
PETC tubes			
wire size 0.1 to 1 mm ² , wire DIA. for the tube 1.1 to 3.3 mm for 4 markers	PETC 31 10 mm	1SNA 168 736 R0100	100
for 8 markers	PETC 51 18 mm	1SNA 168 737 R0200	100
wire size 1 to 2.5 mm ² , wire DIA. for the tube 1.5 to 4.5 mm for 4 markers	PETC 33 10 mm	1SNA 168 740 R2100	100
for 8 markers	PETC 53 18 mm	1SNA 168 741 R1600	100
wire size 2.5 to 10 mm ² , wire DIA. for the tube 3 to 8 mm for 4 markers	PETC 36 10 mm	1SNA 168 746 R1300	100
for 8 markers	PETC 56 18 mm	1SNA 168 747 R1400	100

Marker cards

Blank card of 48 markers for 18 mm tube	RCCV	1SNA 235 460 R0400	1
Handle plate for marking system	SPRCC 2	1SNA 360 011 R0200	1



Marking (cont.)

Marking systems

Marking table

Marking system computer assisted.

Description	Type	Order P/N	Packaging	Weight kg
Full kit including 1 marking table, 1 power supply cable, 1 cable for parallel port, 1 software +	AMS 400	1SNA 360 000 R2400	1	
1 template for 8 RC cards	SPRC 1	1SNA 360 010 R1500	1	
1 plotter pen DIA. 0.25 mm	□ AMS PEN 0,25	1SNA 360 100 R2500	1	
1 plotter pen DIA. 0.35 mm	■ AMS PEN 0,35	1SNA 360 101 R1200	1	
5 ink cartridges	AMS INK	1SNA 360 150 R2600	1	
1 cleaning liquid	AMS CLEANER	1SNA 360 155 R1700	1	
1 cleaning device	AMS CLEANER BOTTLE	1SNA 360 156 R1000	1	

Templates for marking table AMS 400

Template for blank wire markers RCCV	SPRCC 2	1SNA 360 011 R0200	1	
Template for RB strips	SPRC 4	1SNA 360 014 R0500	1	
Template for RTM7-9	SPRC 5	1SNA 360 015 R0600	1	
Template for PIB	SPRC 13	1SNA 360 023 R0600	1	
Template for BA5-50	SPRC 14	1SNA 360 024 R0700	1	
Template for RC-X10A	SPRC 15	1SNA 360 025 R0000	1	

Templates for other markers

Template for Wieland markers	SPRC 6	1SNA 360 016 R0700	1	
Template for Weidmüller markers	SPRC 7	1SNA 360 017 R0000	1	
Template for Phoenix ZBM 5/6 markers	SPRC 8	1SNA 360 018 R1100	1	
Template for Phoenix ZB markers	SPRC 9	1SNA 360 019 R1200	1	
Template for Allen Bradley WRZ markers	SPRC 10	1SNA 360 020 R1700	1	
Template for Wago WSB markers	SPRC 11	1SNA 360 021 R0400	1	
Template for Partex TX/TXZ markers	SPRC 12	1SNA 360 022 R0500	1	

Portable marking table

Marking system computer assisted.

Description	Type	Order P/N	Packaging	Weight kg
Full kit including 1 marking table, 1 power supply cable, 1 cable for parallel port +	AMS 200	1SNA 360 001 R1100	1	
1 template for 1 RC card	SPRC 2	1SNA 360 012 R0300	1	
1 plotter pen DIA. 0.35 mm	■ AMS PEN 0,35	1SNA 360 101 R1200	1	
5 ink cartridges	AMS INK	1SNA 360 150 R2600	1	
1 cleaning liquid	AMS CLEANER	1SNA 360 155 R1700	1	
1 cleaning device	AMS CLEANER BOTTLE	1SNA 360 156 R1000	1	
Optional : power supply battery	BATTERY PACK	1SNA 360 003 R1300	1	

Accessories for marking tables

Plotter pen DIA. 0.18 mm	■ AMS PEN 0,18	1SNA 360 103 R1400	1	
Plotter pen DIA. 0.25 mm	□ AMS PEN 0,25	1SNA 360 100 R2500	1	
Plotter pen DIA. 0.35 mm	■ AMS PEN 0,35	1SNA 360 101 R1200	1	
Plotter pen DIA. 0.50 mm	■ AMS PEN 0,50	1SNA 360 104 R1500	1	
Plotter pen DIA. 0.70 mm	■ AMS PEN 0,70	1SNA 360 105 R1600	1	
Plotter pen DIA. 1 mm	■ AMS PEN 1,00	1SNA 360 106 R1700	1	
Ink bottle 30 ml	AMS INK BOTTLE	1SNA 360 157 R1100	1	
5 ink cartridges 1 ml	AMS INK	1SNA 360 150 R2600	1	
2 cleaning liquid bottles 10 ml	AMS CLEANER	1SNA 360 155 R1700	1	
Cleaning device kit including 1 bottle and 1 absorbent	AMS CLEANER BOTTLE	1SNA 360 156 R1000	1	
Pen	HAND PEN	1SNA 360 107 R1000	1	



Marking table



Templates



Portable marking table

Accessories for marking tables :

